

# TOWN HALL MEETING

June 20<sup>th</sup>, 2013



# LIVE IT



---

**AUGUST 2 TO 17 2013**  
**2013CANADAGAMES.CA**

---

1. A few words about the Games
  - Canada Games
  - Sherbrooke 2013
2. Athletes' Village / Use of the Campus
3. Parking
4. Accreditation
5. Sporting Events on campus
6. For more information....

## ABOUT THE GAMES:

- Single most important **multisport** event in Canada;
- Presented every two years (Winter and Summer Games alternately) in a different province or territory each time;
- Inspiring our youth to take up sports and devote time to physical activities;
- 100 000 participating athletes since 1967;
- Plays an important role in the development of our best Canadian athletes;
- Served as springboard for the careers of renowned Canadian athletes like:

Sidney Crosby, Bob Gainey, Steve Nash, Catriona Lemay-Doan, Hayley Wickenheiser, Alexandre Despatie, Cindy Klassen, Sylvie Daigle ...and many more.

# SHERBROOKE 2013:

- Quebec is hosting the Summer Games for the first time ever
- August 2<sup>nd</sup> to 17th Sherbrooke will be host to 4,200 athletes and over 1,000 coaches, trainers, mission staff, etc.
- 20 Sporting Events
- Representation from 13 provinces and territories
- Competitions will be held throughout the Eastern Townships (including Coaticook, Magog)
- The athletes will be residing at the Bishop's and Champlain Residences

# ATHLETES' VILLAGE :



# USE OF THE CAMPUS:

- The Athletes' Village will be open from August 1-18
- The Village will provide :
  - Housing for athletes
  - Food Services at Dewhurst for athletes and other spaces on campus
  - Entertainment for athletes (internet café and various entertainment)
  - Village information Centre
  - Offices and meeting rooms for missions services and other staff
  - Coaches lounge and other services (accreditation, etc.)



## Mission Services and Other Services:



Mission Parking Spaces  
P5 and P8

# PARKING:

P1-4-6-7-10 = Staff  
Parking





# ACCREDITATION AND ACCESS CONTROL:

## ***Secured zones :***

- Residences (through checkpoints)
- Dewhurst dining hall
- Entertainment areas, internet cafés social venues

Accreditation tags must be worn at all times.

## ***Additional Access Control Points:***

Additional access control points will operate throughout the Athletes' Village to control access to entertainment, special functions, relaxation areas and equipment rooms



**VIVEZ-LIVE IT**

**Laura  
Routhier-Pomerleau**

Agent d'information du sport  
Sport Information Officer



**CCR CGP CSB CSS CSR**



1

2

3

4

5

6

**OBSS**

# SPORTING EVENTS ON CAMPUS:

- **Week 1 – Men’s Basketball and Women’s Soccer**
- **Week 2 – Women’s Basketball and Men’s Soccer**
- Round robin, quarterfinal and semi-final games will be played at Bishop’s
- The daily schedule is subject to change and updates will be provided to the community
  - **Two basketball and two soccer games daily (between 9am and 6pm)**
- Daily “All Sites” tickets available for \$10/adults, \$8 for 14 and -, \$8 for 65 and kids under 6 are free.
- Daily “Site Specific” tickets available (5/adults, etc.)
- Playoff Daily tickets also available (\$15/adults, etc.)
- **Sports Centre will be closed to the members and general public from Aug 1 to Aug 18<sup>th</sup> inclusively.**

## TICKETS AND INFORMATION:

- Via website [www.jeuxducanada2013.ca](http://www.jeuxducanada2013.ca)
- Via Ovation au [www.ovation.qc.ca](http://www.ovation.qc.ca)
- Phone - Centre Culturel 819-820-1000
- In person - Centre Culturel - Université de Sherbrooke

## **OTHER:**

- **STS – free bus with accreditation badge during the Games**
- **Marketing and Recruitment initiatives both on and off campus**
- **Visitors are welcome on campus – parking will be restricted**
- **Satellite parking at Alexander Galt – with shuttle**

# Questions?



# Agenda

1. Reputation
2. Enrolment
3. Academic Mission
4. The Student Experience
5. Convocation
6. Projects
7. Advancement Office
8. People
9. Governance
10. Capital Campaign
11. Finances
12. Strategic Planning

# 1. REPUTATION

# Reputation

## Globe and Mail's Canadian University Report (CUR) 2013

*(in comparison to other small size universities)*

Student/Faculty interaction	A+	1 <sup>st</sup>
Campus Atmosphere	A+	1 <sup>st</sup>
Class size	A+	1 <sup>st</sup>
Most satisfied students	A	1 <sup>st</sup>
Work-play balance	A	1 <sup>st</sup>



**« Do you think your institution is open to trying new approaches and ideas? »**

Bishop's ranked first in Canada.

**« Do you think your institution emphasizes student-centered learning where students question, problem-solve, and decide for themselves? »**

Bishop's ranked second in Canada.

In the category work-play balance, Bishop's received the highest mark of all Canadian universities, and was the only one to obtain an A.

Since 2006, Bishop's consistently obtained A+ or A in six categories : Most satisfied students, Student /Faculty interaction, Class size, Campus Atmosphere, Quality of teaching & learning and Instructors' teaching style.

# Reputation

## National Survey of Student Engagement (NSSE) 2011

Supportive Campus Environment:	2nd
Student-Faculty Interaction:	2nd
Active and Collaborative Learning:	4th
Enriching Educational Experience:	4th
Level of Academic Challenge:	6th

**“How would you evaluate your entire educational experience at this institution?”**

- Bishop's ranked 5th in Canada among first year students and 6th among senior students.

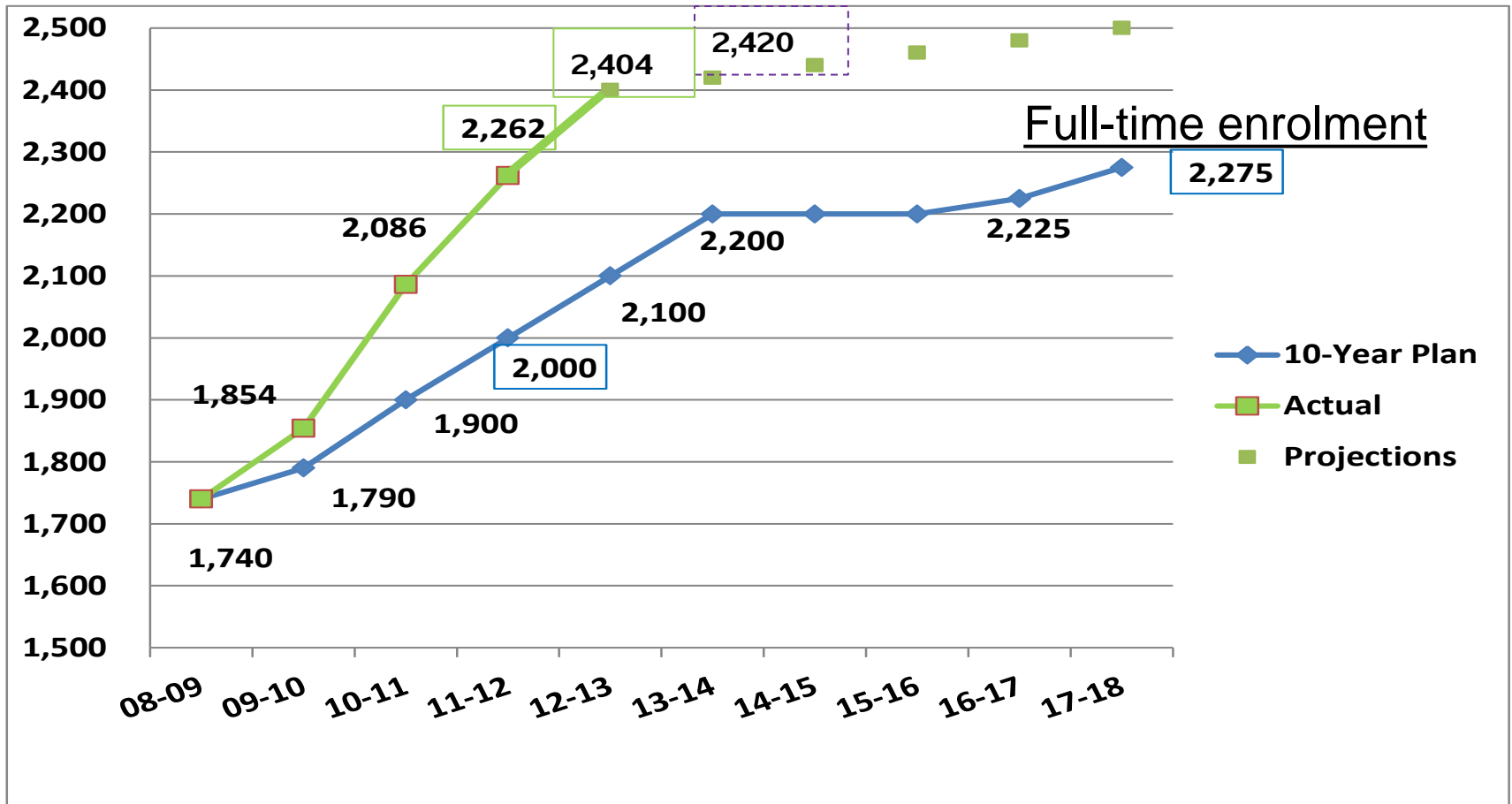
**“If you could start over, would you go to the institution you are now attending?”**

- Bishop's ranked 3<sup>rd</sup> among senior students and 5<sup>th</sup> in Canada among first year students

- ❖ NSSE is becoming widely regarded as the measurement tool in higher education.
- ❖ Bishop's continues to press Maclean's to use the NSSE results in its rankings.
- ❖ Two-year cycle for the survey.

## 2. ENROLMENT

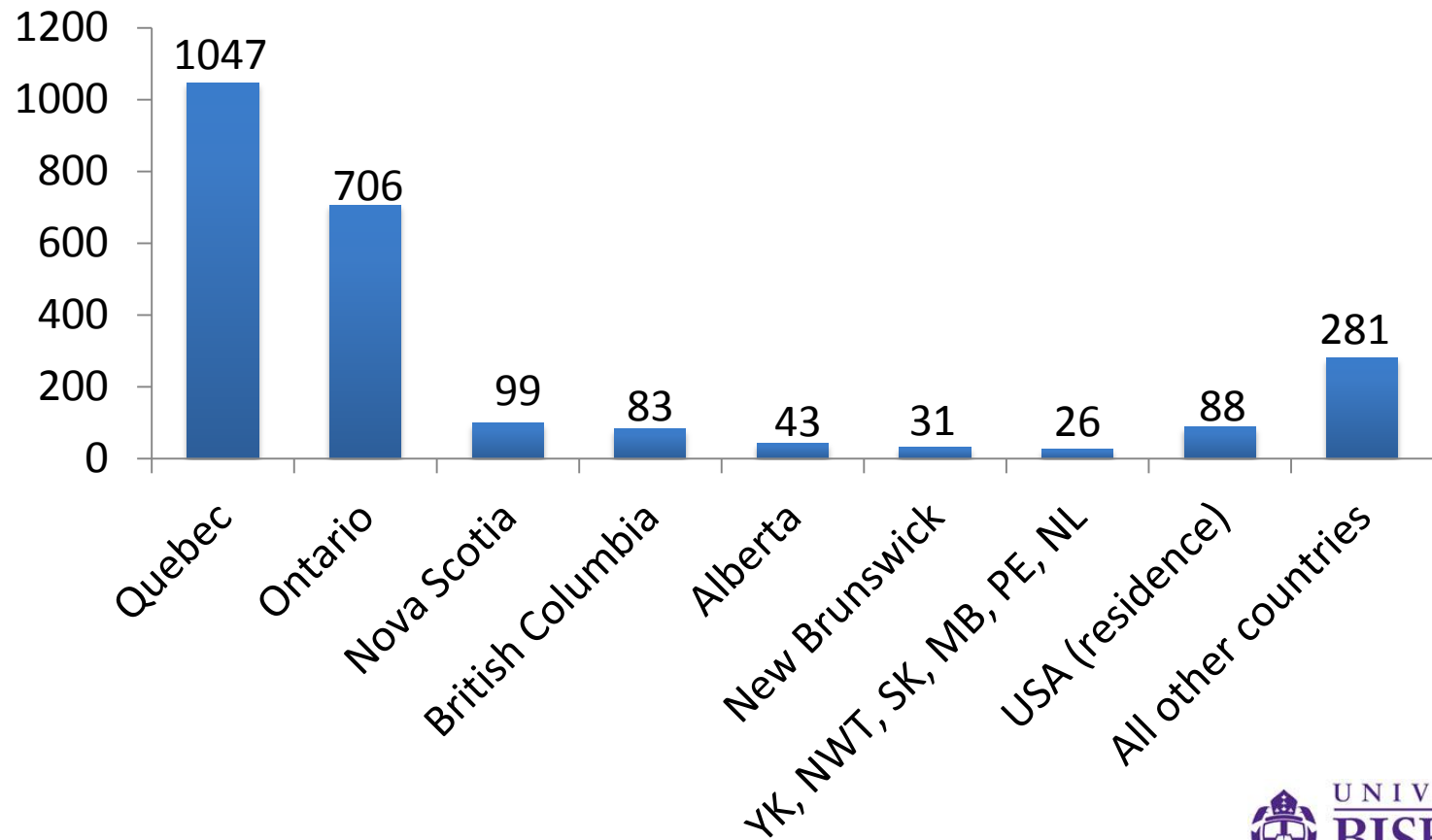
# Enrolment growth since 2008



❖ Reached new plateau with the first of larger graduating classes

# Bishop's Student Mix

## Student mix - FT Enrolment By origin, 2012-13



# Enrolment Trends

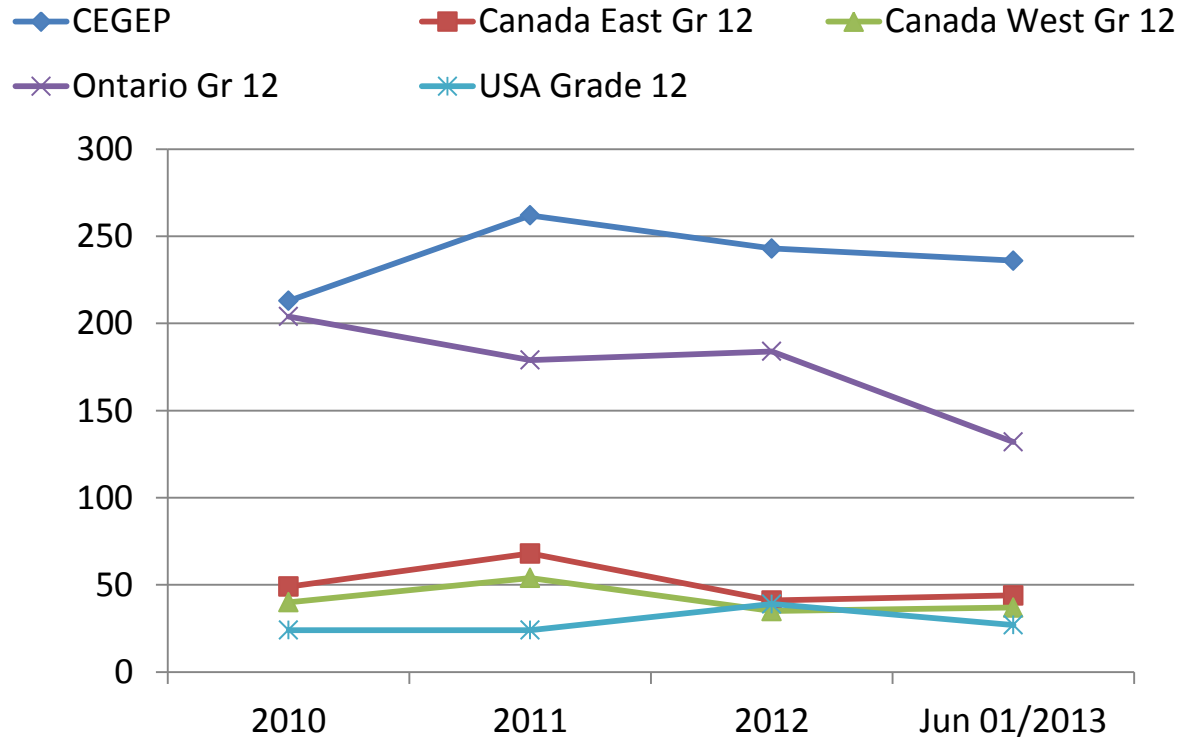
**“Will attends” for September are:**

- ❖ ↓ (Down) from Ontario, USA
- ❖ – (Stable) from Quebec
- ❖ ↑ (Slightly up) from Eastern Canada and Western Canada
- ❖ We are on track to meet our target of 2,420 full-time students.
- ❖ But the 2013-14 entering class will be smaller than in 2012-13.

# Confirmations for Fall 2013

## Offers Accepted from Main Markets

*June 1, 2013*



- ❖ Ontario is almost entirely responsible for the overall decline in the number of students who are currently “will attends” for this fall.

# The Ontario Decline

## Why are Ontario applications down?

1. Negative perceptions of student unrest and university funding cuts?
2. Ontario government \$1,766 tuition reductions for students who stay in Ontario?
3. Demographic changes ?

Market research this summer will test these assumptions for 2013-14 recruitment planning.

# Highlights for 2013-14

- ❖ Update and refocus the [ubishops.ca](http://ubishops.ca) website
- ❖ Perform market research in Quebec and out-of-province
- ❖ Design market-specific recruitment materials
- ❖ Consider international recruitment opportunities

### 3. ACADEMIC MISSION

# Research highlights

## A successful year

- \* For the second year in a row we received over \$1.5 M of external research funding
- ❖ Implementation of the 2013-2016 Strategic Research Plan
- ❖ Welcomed four Postdoctoral Fellows
- ❖ Research partnership agreement with Research Centre on Aging – CSSS-IUGS
- ❖ Visit of Quebec Health Minister and accomplished researcher Dr. Réjean Hébert during Research Week

# Research highlights

Creation of 4 state-of-the-art laboratories  
FUNDED BY CFI – MELS – BISHOP'S

## Dr. Peros

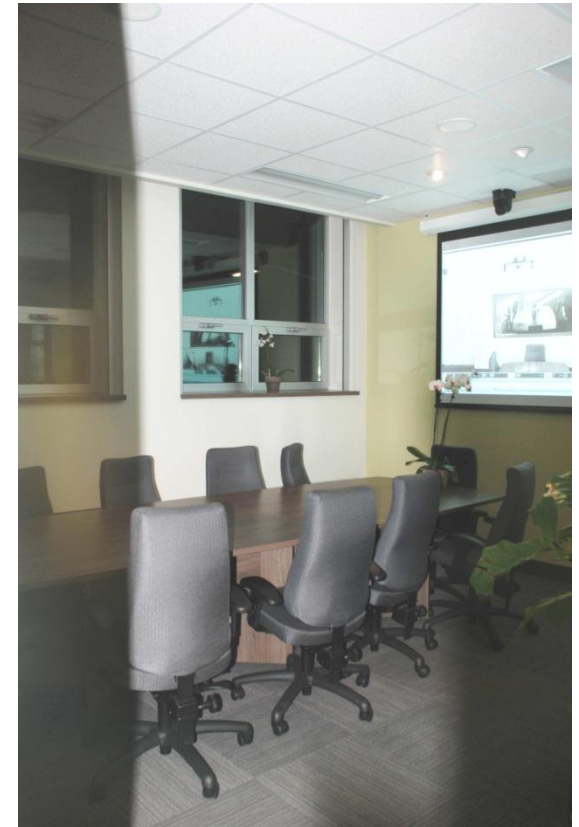
*Multi-Scale Climate and Environmental Change,*



# Research highlights

**Dr. Fushia Sirois**

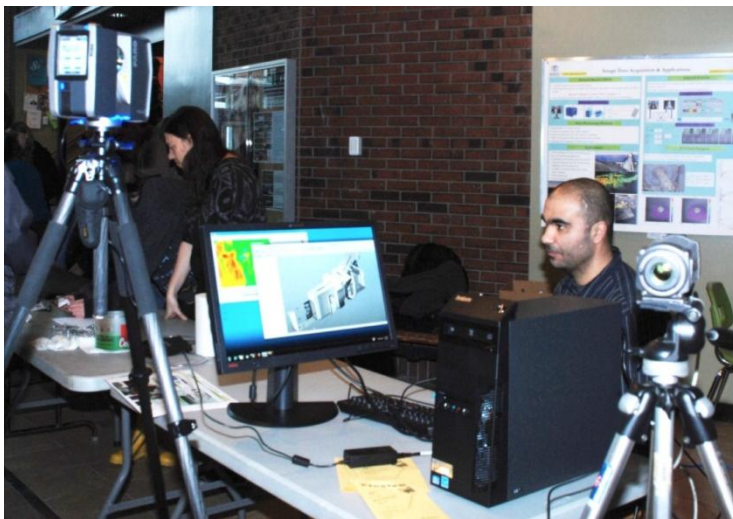
*Health and Well-Being Lab*



# Research highlights

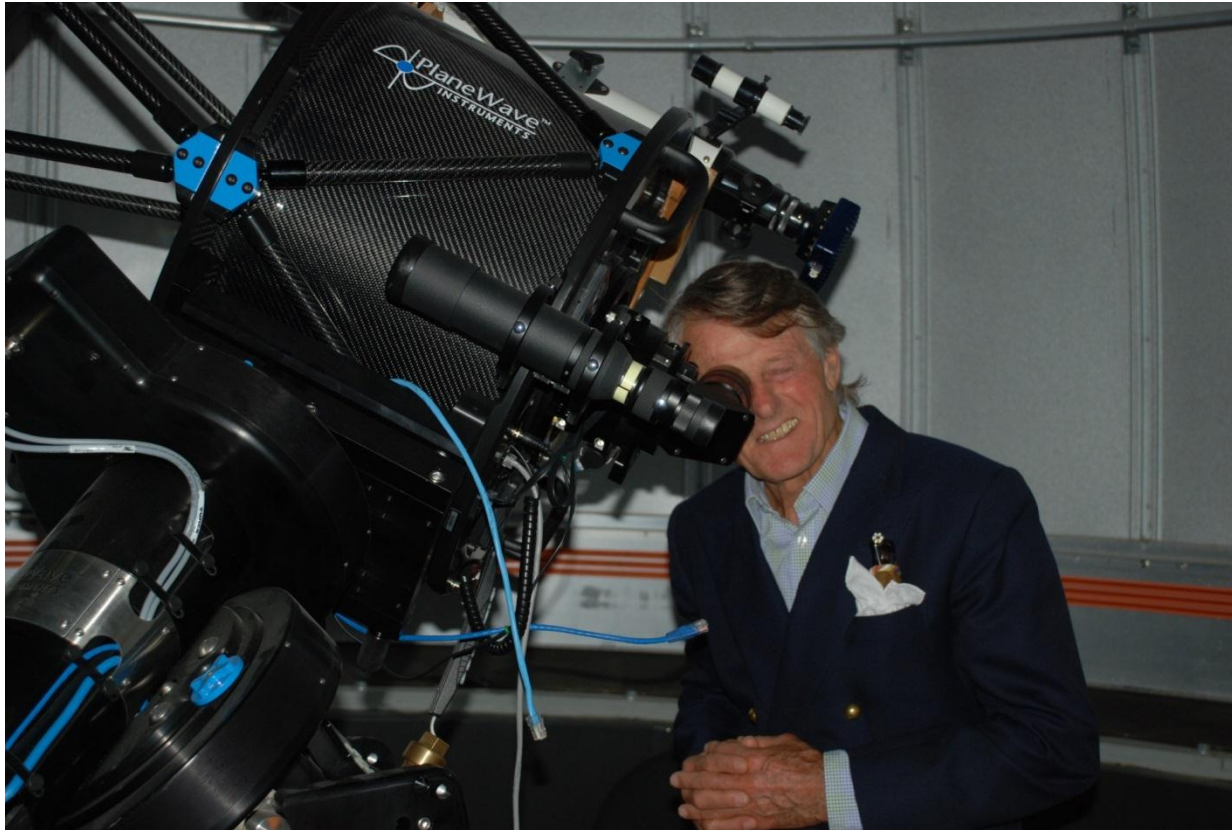
## Dr. Madjid Allili & Dr. Layachi Bentabet

- Laboratory for modeling, mapping and assessing natural and man-made structures
- The data generated with their Ground-Based LIDAR (scan) supports scene reconstruction, high-resolution surface model generation and the production of 3D virtual environment models.



- Their research activities aim at combining ideas of computational topology, statistical methods and classical techniques in image processing and visualization to study and analyze multidimensional data sets.

# Scott Griffin telescope



Plaque unveiling on May 10, 2013

# Research highlights

## Dr. Lorne Nelson

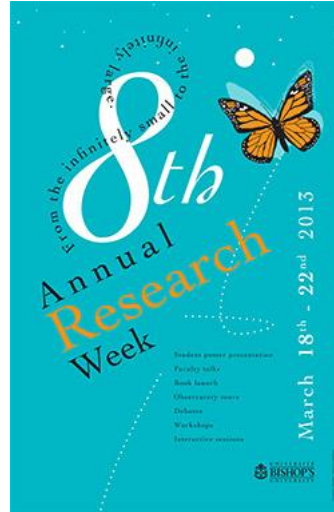
*Access-Grid : National Computer Platform*

- The STAR Cluster is carrying out numerical simulations of interacting binary stars and modeling the evolution of very low-mass stars and planets in various contexts.
- The large amount of available CPU (Central Processing Unit) time will allow for highly complex calculations.



# Research Week – March 18<sup>th</sup>-22<sup>nd</sup>, 2013

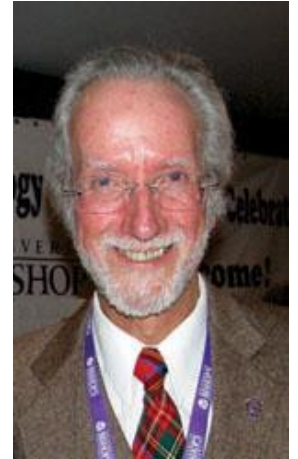
- Bishop's Research Idol
- Student Poster presentations
- Faculty talks
- Book launch
- Observatory tours
- Debates



# Awards

## Bishop's University Research and Creativity Award

Dr. Stuart McKelvie



## William and Nancy Turner Teaching Award

Michael Teed



## Prix RIDEAU Reconnaissance 2013



Luce Couture

*for her extraordinary contribution to the advancement  
and expansion in the field of performing arts presentation*

# Teaching & Learning Centre Initiative



## ❖ Workshops & talks

Dr. Chad Gaffield	Digitization of the humanities & Implications for teaching and learning
Veronica Brown and Dr. Julie Timmermans	Course Design Fundamentals and Design Assessment for Learning

## ❖ Bishop's University Teaching Talks (BUTTS)

Fall 2012	Winter 2013
Technology & Higher Education	Leadership in the Classroom
Formative and Summative Assessment	Using Clickers in the Classroom
Integrative Learning Inside and Outside the Classroom	Teaching Evaluations
Problem Based Learning	Interteaching

## ❖ Symposium on Teaching and Learning (May 7, 2013)

## 4. THE STUDENT EXPERIENCE

# International Exchanges

## INCOMING INTERNATIONAL EXCHANGE STUDENTS



**Roskilde University,  
Denmark**

## Yamaguchi Prefectural University

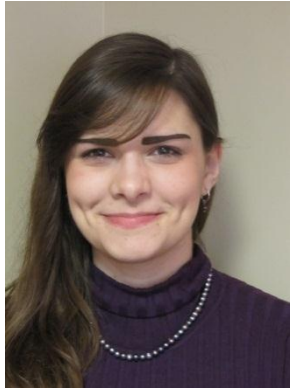
- 2013/14 – 5 BU Students  
- 4 YPU Students

	BU exchange students abroad	International exchange students
2012-13	62	130
# of countries	18	25
2013-14	105	145
# of countries	25	23(*Fall only)

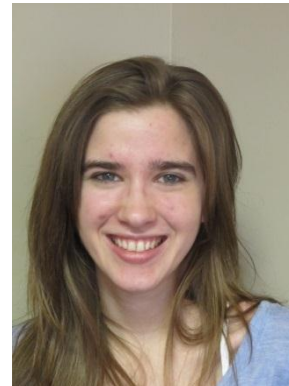
## BISHOP'S EXCHANGE STUDENTS ABROAD



# B.E.S.T.



**B.E.S.T. is a \$50,000 annual fund to support outstanding students undertake projects or internships that will help them advance their careers or determine the path they wish to pursue.**



# Student Achievement

**Sandra Cinq-Mars, B.B.A. '13 and Jarad Plato, B.Sc. '13**

- ❖ *Next 36* project selects the most promising young entrepreneurs from across Canada.
- ❖ For eight months they :
  - are mentored by top business leaders;
  - receive instructions from outstanding faculty; and
  - receive up to \$80,000 in venture capital.
- ❖ They build a mobile or tablet business in teams of three.



# Promoting Student Research

## Quebec Universities English Undergraduate Conference (QUEUC)

- ❖ Founded by English professor Jessica Riddell
- ❖ Highlights undergraduate student research
- ❖ The fourth annual conference in 2013 attracted 115 participants and 42 presenters (chosen from 180 submissions) from 21 universities from coast to coast.



# Network of International Business Schools (NIBS)

## Congratulations



## 2013 NIBS Champions

# Athletics



**Rod Gilpin**

Coach of the year

*Réseau du sport étudiant  
du Québec (RSEQ)*

## Men's Basketball

### Finalists



**Mike Andrews**  
(3rd year Education  
student )

Player of the year

Defensive player  
of the year

All-star team



# The Performing Arts

## The Comedy of Errors

SHAKESPEARE WITH ATTITUDE AND SHADES...

Adapted by: George Rideout

June 7-15, 2013



## Sticks and Stones



March 14-18, 2013

## ORESTES

NOV. 14-18TH  
TURNER STUDIO THEATRE  
8\$ STUDENT / 10\$ ADULTS  
TICKETS AVAIL. AT CENTENNIAL THEATRE



DIRECTED BY  
GREG TUCK

BISHOP'S UNIVERSITY DRAMA PRESENTS THE CLASSIC COMEDY BY OSCAR WILDE

*The Importance of Being Earnest*

TICKETS \$10 & \$12  
CENTENNIAL BOX OFFICE  
819-822-9692

OCTOBER 24-28 • 8 PM • TURNER STUDIO THEATRE



UNIVERSITÉ  
**BISHOP'S**  
UNIVERSITY

# Mental Health Awareness Week

**First Mental Health Awareness Week held  
on February 11-15, 2013**

❖ 5 themes:



Canadian Mental  
Health Association  
*Mental health for all*

- ❖ Procrastination (Dr. Fushia Sirois)
- ❖ Depression, anxiety & eating disorders
- ❖ Drugs and Alcohol use & abuse (Dr. Adrianna Mendrek)
- ❖ Relationships (Dr. Heather Lawford)
- ❖ Wellness

# Refugee Sponsorship



- ❖ 20<sup>th</sup> Anniversary (33 sponsored students)
- ❖ 8<sup>th</sup> Annual Student Fashion show raised \$9,200
- ❖ Garage Sale raised almost \$15,000

## 5. CONVOCATION

# Honorary Doctorates and 19<sup>th</sup> Chancellor installation



Brian Levitt, Johnny Reid, Scott Griffin, Jean Charest,  
Michael Goldbloom, Alain Lemaire and Monique Nadeau-  
Saumier

# Hommage to Scott Griffin



**2005-2013**

## 6. PROJECTS

# U4 League – Launch (May 1, 2013)



**Acadia University**



**Bishop's University**



**Mount Allison University**



**St. Francis Xavier University**

# U4 League events

Up for Debate Weekend – Bishop's University, February 7 & 8, 2013



# Agreement with the STS



- Starting September 1<sup>st</sup>, BU employees will benefit from a 25% reduction on an **annual** bus pass (« La Boulobusolution »)
- Payment will be made via payroll
- Passes will be available at the Business Office
- More information will be available to the Community in August when the agreement is finalized

# Quebec-Vermont forum on bio-energies



- ❖ October 25 and 26, 2013 (120 participants)
- ❖ The forum will bring together leaders from the academic, government and business sectors in the Eastern Townships and in Vermont

# Sports Centre

Completion Date:

December 2014



## 7. ADVANCEMENT OFFICE

# Alumni Events



## Fall 2012 Highlights

- ❖ Homecoming (35<sup>th</sup> Reunion, '75-'79)
- ❖ Wall of Distinction (1971 Football & John Pratt '58)
- ❖ Montreal Bankers' Day
- ❖ Vanier Cup Skybox Event
- ❖ Purple Tag Day (National Philanthropy Day)

## 2013 Highlights

- ❖ Bishop's Bootcamp
- ❖ SRC Presidents' Reunion
- ❖ JUMP Mentoring
- ❖ Networking Reception with CareerJoy & Alumni Panel
- ❖ Wine Tasting
- ❖ Grad Receptions
- ❖ Golf Tournaments



# Foundation

- ❖ In 2012-13, the annual campaign raised **over \$1.5 M** which was invested in students through:
  - Scholarships (\$1.2 million)
  - Need-based bursaries (\$70K)
  - Athletic and academic awards (over \$100K)
  - Prizes (over \$119K)
  - Student internships at the local and international levels (\$143K)

# The Donald Lecture Series: 2012-2013



November 14, 2012

**SUSAN CAIN**

Author, lawyer,  
negotiation and  
leadership



February 9, 2013

**STEVE  
PATTERSON**

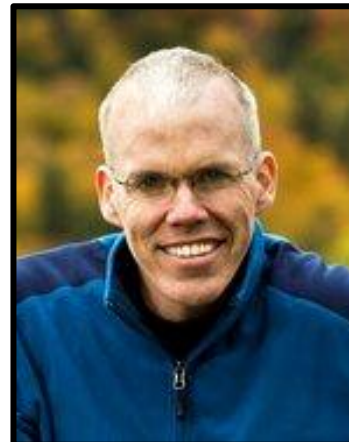
The Debaters



February 20, 2013

**Rt. Hon.  
MICHAËLLE JEAN**

Former Governor  
General of Canada



March 18, 2013

**BILL MCKIBBEN**

Author and  
Environmentalist

## 8. PEOPLE

# Human resources



- ❖ Collective Bargaining
  - ✓ Faculty
  - ✓ Contract Faculty
  - ✓ Librarian
  - ✓ Staff
- ❖ Pension plan
- ❖ Job classification
- ❖ Health and Safety Coordinator

# Academic Officers (Transitions)

## ❖ Vice-Principal Academic

Dr. Michael Childs



## ❖ Dean of Education

Dr. Catherine Beauchamp



## ❖ Dean of Arts and Science and Associate Vice-Principal Research

Dr. Benoit-Antoine Bacon



# New Academic Officers

## ❖ Acting Vice-Principal Academic

Dr. James Crooks



## ❖ Acting Dean of Arts and Science

Dr. Michele Murray



## ❖ Acting Dean of the Williams School of Business

Dr. Calin Valsan



## ❖ Acting Dean of the School of Education

Dr. Avril Aitken



# New Senior Administrators

## ❖ Executive Director, University Advancement

Brigitte Quintal



## ❖ Director of Enrolment Management –

Scott Duguay



# Management Restructuring

The following positions were abolished:

❖ **Communications Manager**

Célie Cournoyer

❖ **Director of Security**

Dan Major

# New Faculty Hires (tenure stream)

❖ Vicki Chartrand – Sociology

*Area of expertise: Criminology*



## 9. GOVERNANCE

# Board of Governors

## New members

**Brian Levitt**



**Cathy McLean**



**Robert Hall**



# Board of Governors

## New members

**Claire Grogan**



**Kim Huet**



# Alumni Associaton

- Chris Forsyth will succeed Cathy McLean as the Alumni Association President



- Trevor Lovig will become the President-Elect



## 10. CAPITAL CAMPAIGN

# *Leading the Way Campaign*

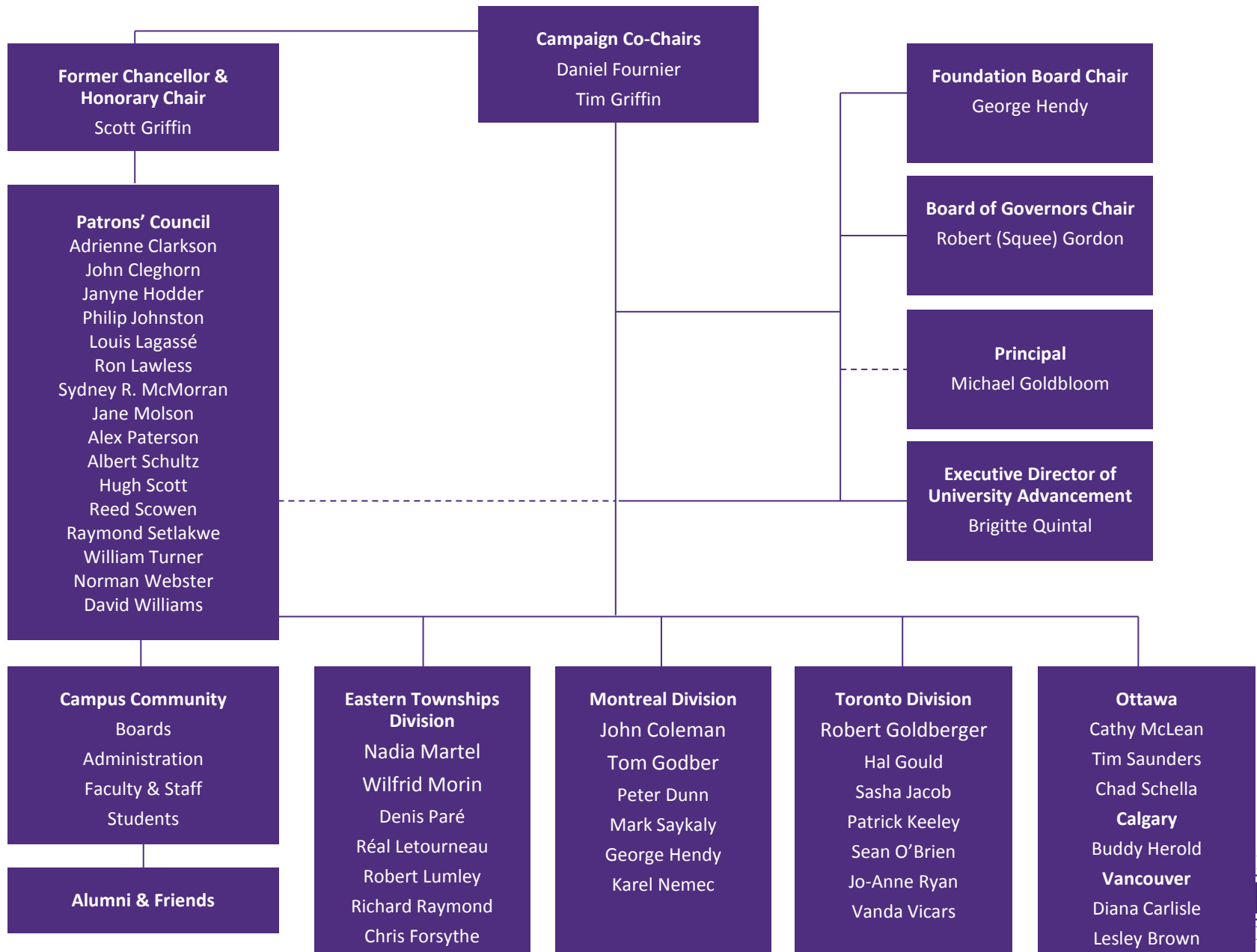


**Campaign Objective:** **\$60,000,000**

(equally divided between philanthropy and government support)

- Sports Centre \$32M
- Library (phase 1) \$10M
  - Phase 2 (\$11M)
- Williams School of Business & Dobson-Lagassé Entrepreneurship Centre \$8M
- Academic Support \$10M
  - Scholarships
  - Excellence in undergraduate education
  - Research
  - B.E.S.T. Program Fund
  - Donald Lecture Series

# Campaign Cabinet



# Campaign Co- Chairs

Daniel Fournier



Executive Vice-President,  
Real Estate and  
President, Real Estate Group  
*Caisse de dépôt et placement du  
Québec*

Tim Griffin



Chairman  
*Connor, Clark & Lunn  
private capital*

# Next Steps

❖ Gifts Received/Confirmed: \$9.3M



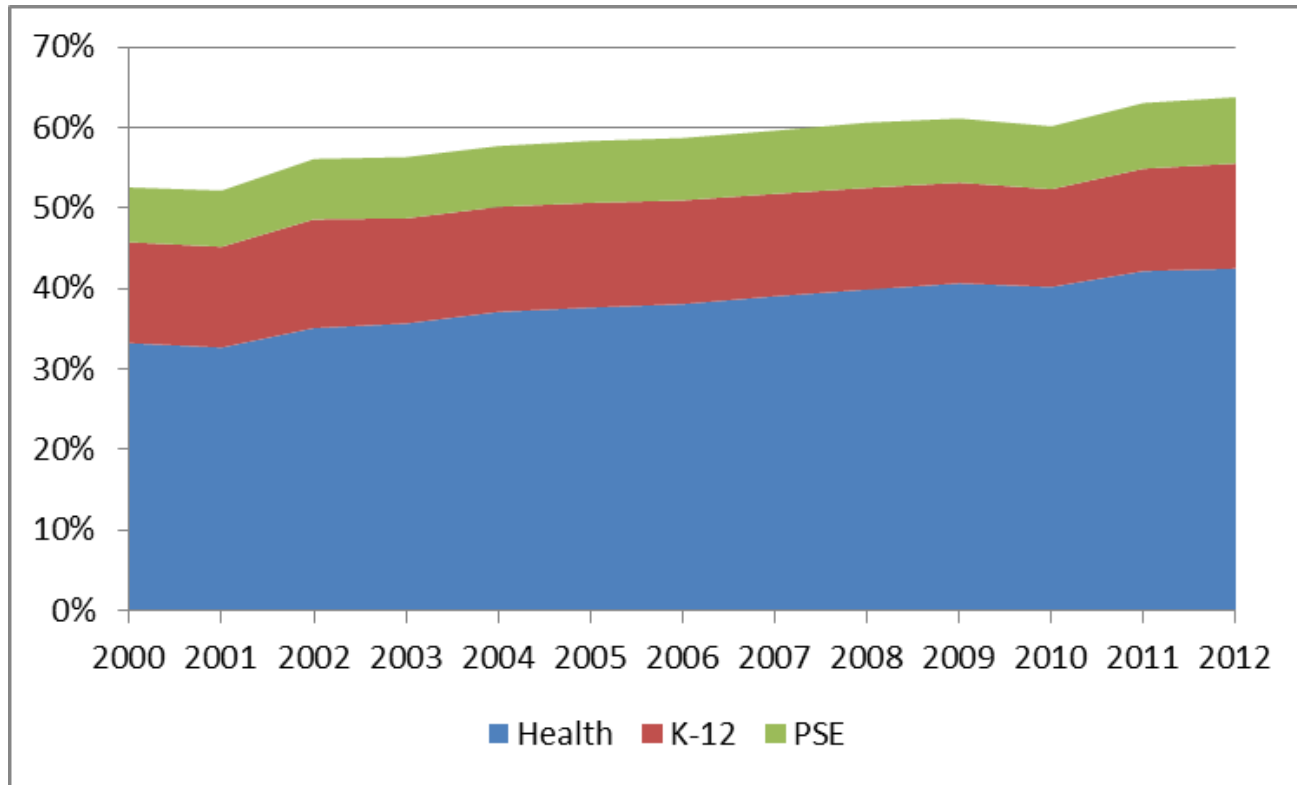
❖ On the horizon:

- The Banks (RBC, TD, etc.)
- Key Foundations and Corporations: (Molson, McConnell, Webster)
- Montreal & Toronto Cabinets: Individual identification and prospecting
- Eastern Townships Corporations (BRP, Cascades...)
- Campus Community Campaign
- Public launch



# 11. FINANCES

# Health and Education in Canada



“The cost of health care is growing faster than overall government revenues, and taking an ever-greater share of government resources.

It is unlikely that, over the next decade, government funding for Higher Education will increase at the same rate as it has over the last decade.” – Alex Usher, Higher Education Strategy Associates

# Current Context - 2012-13 Forecast

- ❖ Last year the Board approved a **break-even budget for 2012-13**
  - Year 5 of the 10YP - target was **\$462,000**
- ❖ Budgeted tuition increase of \$325/student (for 5 years) was reduced to \$254 (for 7 years) then eventually reduced to **zero**
- ❖ Tuition compensation - \$143/student
- ❖ Pension changes not ratified by July 1<sup>st</sup> so implementation of the cost savings measures was delayed to January 1<sup>st</sup> 2013

# Current Context - 2012-13 Forecast

- ❖ In December 2012 the government announced a **grant cut of \$1.2 million** in the year
- ❖ We have projected a deficit of approximately \$1M for 2012-13
- ❖ Consequently, were it not for the cuts, we would have met our objective of a balanced budget
- ❖ While final results are not yet available, we are confident we will have done better than the projected \$1M deficit

# Current Context - 2013-14 MESRST Target

- ❖ Under the government's new rules, we must absorb \$600,000 of the \$1.2 M cut (50%) over two years (2012-13 and 2013-14)
- ❖ We will have absorbed at least \$200,000 in 2012-13 leaving up to \$400,000 to be absorbed in 2013-14
- ❖ However, the budget we adopted for 2013-14 is breakeven – resulting in a \$400,000 shortfall to the Government's expectations

# Current Context - 2013-14 Year 6 of 10YP

- ❖ 2013-14 is **Year 6** of the 10-Year Plan – it is the second year that the University was expected to have an annual surplus - **\$804,000**
  - The plan had losses in years 1-4
  - Surplus for the first time in 2012-13
  
- ❖ 2013-14 **accumulated deficit** (before GAAP)- **\$5.1 million vs. \$13.5 million in 10YP** at June 30<sup>th</sup> 2014 (\$8.4 million positive variance)

# Achieving a balanced budget

- ❖ For the short term, we have frozen spending in many areas to get to a balanced budget:
  - Residence buildings repairs
  - Buildings & Grounds projects
  - Library
  - ITS projects
  - Approving only one of the seven tenure stream faculty positions recommended by Senate
- ❖ Some areas have not had the resources requested

# Pension

## ❖ Defined benefit plans are under threat

- Longer life expectancy on retirement
- Lower financial returns

## ❖ Bishop's plan is particularly mature

- Nearly half the members of the plan are no longer contributing: retired, left Bishop's, dependents

## ❖ Valuation of pension plan June 2014

- Expect deficit to increase somewhat

# Pension

## ❖ D'Amours Commission Report

- A Parliamentary Commission is studying recommendations on governance and funding of pension plans
- If its recommendations are implemented, costs will increase significantly to members and the University
- We will have a better idea in the fall

## 12. STRATEGIC PLANNING

# Strategic Planning

## ❖ 2010-11

- **Strategic Orientations Steering Committee** – faculty, staff, External Board members
- **Board retreat** – broader discussion of vision, mission, values and SWOT
- **Unit retreats/feedback on vision, mission values** – Advancement Office, Building and Grounds, Business Office, ITS, Library, Student Services

# Strategic Planning

## ❖ 2011-12

- **Vision, Mission, Values** – consultation broadly with community, in Divisions, Senate and Board Approval
- **Ad Hoc Committee on the Liberal Education** – broad consultation within the academic community and with students
- **Master plan for the campus** – broad consultation within the Bishop's community
- **Ancillaries diagnostic** – in consultation with managers in the ancillaries area

# Strategic Planning

## ❖ 2012-13

- Articulation of strategic priorities
- Prioritisation of ancillaries projects to advance those where revenues may be generated
- Research on potential markets for recruitment of:
  - Quebec students, Anglophone and Francophone
  - part-time students
  - international students

# Advancing our mission

## ❖ Strategic focus:

- reaffirmed commitment to small size and residential nature of the university
- reaffirmed commitment to the centrality of the liberal education and articulation of outcomes
- focused on recruitment of students
- new Student Information System

# Advancing our mission

## ❖ Strategic focus:

- recruitment of faculty according to priorities set by Senate Planning Committee
- research plan implemented and revised
- continued focus on attracting students, particularly into programs where we have capacity
- enhancement of student services

# Six Priorities

1. Excel in the delivery of undergraduate education
2. Provide an outstanding student experience
3. Optimize enrolment
4. Ensure financial sustainability
5. Sustain a positive work environment
6. Foster a strong sense of community

# Consultation

## ❖ Consultation plan for fall 2013

- consistent with governance and academic responsibilities
- direct reports to senior administration and the units they lead
- broad consultation in the community

# Enjoy your summer !



*Wellness Day winners – Robert Burns, Alex Perno,  
Marty Rourke and Brian Breckles*